

# APD Muffler

## SAFETY INSTRUCTIONS

1. Read all instructions thoroughly. Failure to do so may result in system damage and/or personal injury.
2. The system must be pumped down and lines de-pressurized before attempting to install. Failure to do so could result in personal injury.
3. Emerson's APD is intended for use with all HFC, HCFC and CFC refrigerants except R-123 and those classified by ASHRAE standard 34 as A2, A3, B2 and B3.

**CAUTION:** Do not use on unlisted gases or fluids without prior approval of the Emerson Climate Technologies Flow Controls Division Applications Engineering Department. Use on other fluids could result in product deterioration and/or personal injury.

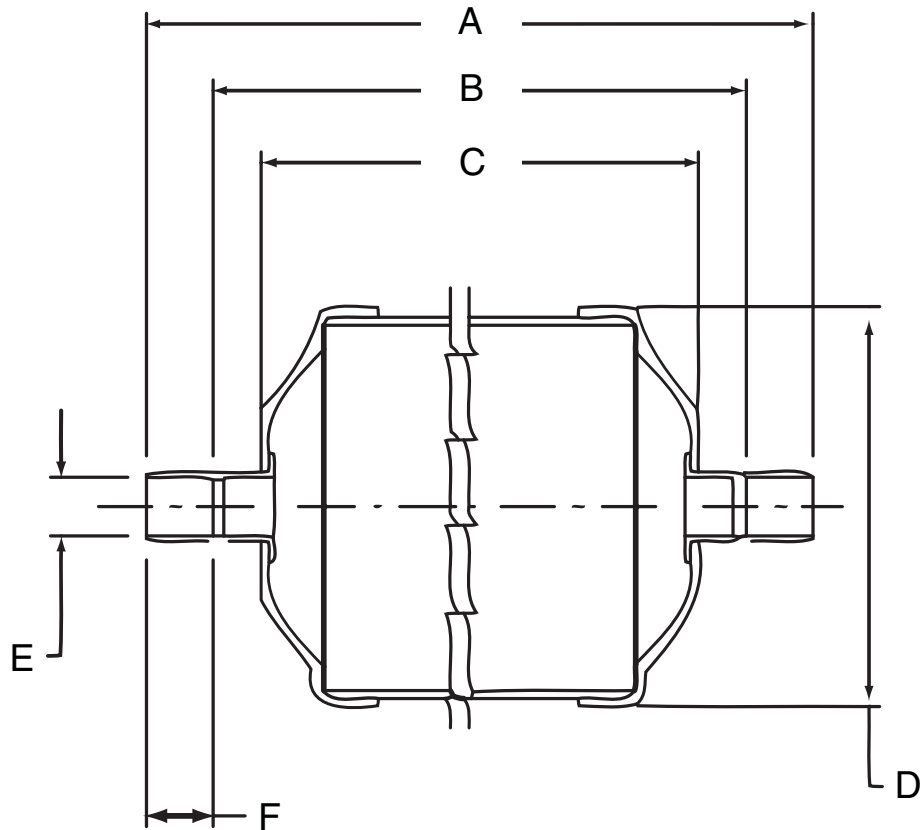
4. Be sure the muffler is not required to operate at conditions exceeding the maximum working pressure of 680 PSIG. Failure to do so could result in personal injury.

## INSTALLATION INSTRUCTIONS

1. Do not remove the APD muffler from the carton until ready for installation. The seal caps should be removed only at time of installation. This further protects the APD from possible contamination.
2. The APD mufflers may be installed in the vertical or inclined position **ONLY**. See Tables for roughing - in dimensions. **CAUTION:** Installing a standard APD horizontally could cause oil trapping and loss of lubrication of the compressor.
3. When soldering divert flame away from the APD to avoid possible internal damage. Use chill blocks, wet rags, or other suitable heat protection of the muffler.
4. Pressurize system and check for leaks. If inert gas, such as nitrogen or carbon dioxide is added to the system to supplement the refrigerant pressure, it must be added carefully through a pressure regulator and pressure relief valve. Unregulated gas pressure can seriously damage the system and endanger human life. **NEVER** use oxygen or flammable gases.
5. If additional repairs are required after the system has been charged, additional precautions are necessary. Pump down the entire system, remove refrigerant by an approved method from the section where repairs are to be made. Do not use a solenoid valve as a safety shut-off valve while making repairs to a system. After reducing the pressure to atmospheric, the system may be opened and repairs made. The area should be thoroughly vented to prevent formation of dangerous fumes, which could result from the refrigerant being heavier than air.

**DIMENSIONS TABLE**

DESCRIPTION	A . 13	B. 09	C. 06	D. 03	E. 003	F. 02
APD-052S	4.44	3.68	3.00	2.62	.254	.38
APD-053S	4.47	3.66			.379	.40
APD-054S	4.56	3.56			.504	.50
APD-055S	4.81	3.56			.629	.63
APD-083S	5.78	4.48	3.81		.379	.40
APD-084S	5.38	4.38			.504	.50
APD-085S	5.62	4.38			.629	.63
APD-163S	6.22	5.41	4.75		.379	.40
APD-164S	6.31	5.31			.504	.50
APD-165S	6.56	5.31			.629	.63
APD-167S	7.13	5.63			.879	.75
APD-305S	9.31	8.06	7.50	3.14	.629	.63
APD-307S	9.9	8.4			.879	.75
APD-309S	10.25	8.44	7.5	3.14	1.129	.90
APD-306 SSI	10.29	9.04	8.1	3.14	.754	.63
APD-306S	9.65	8.4	7.5	3.14	.754	.63
APD-414S	9.19	8.19	7.63	3.64	.504	.50
APD-754S	14.61	13.61	13.047	3.64	.504	.50



DIMENSIONS DO NOT INCLUDE WELD BEAD